

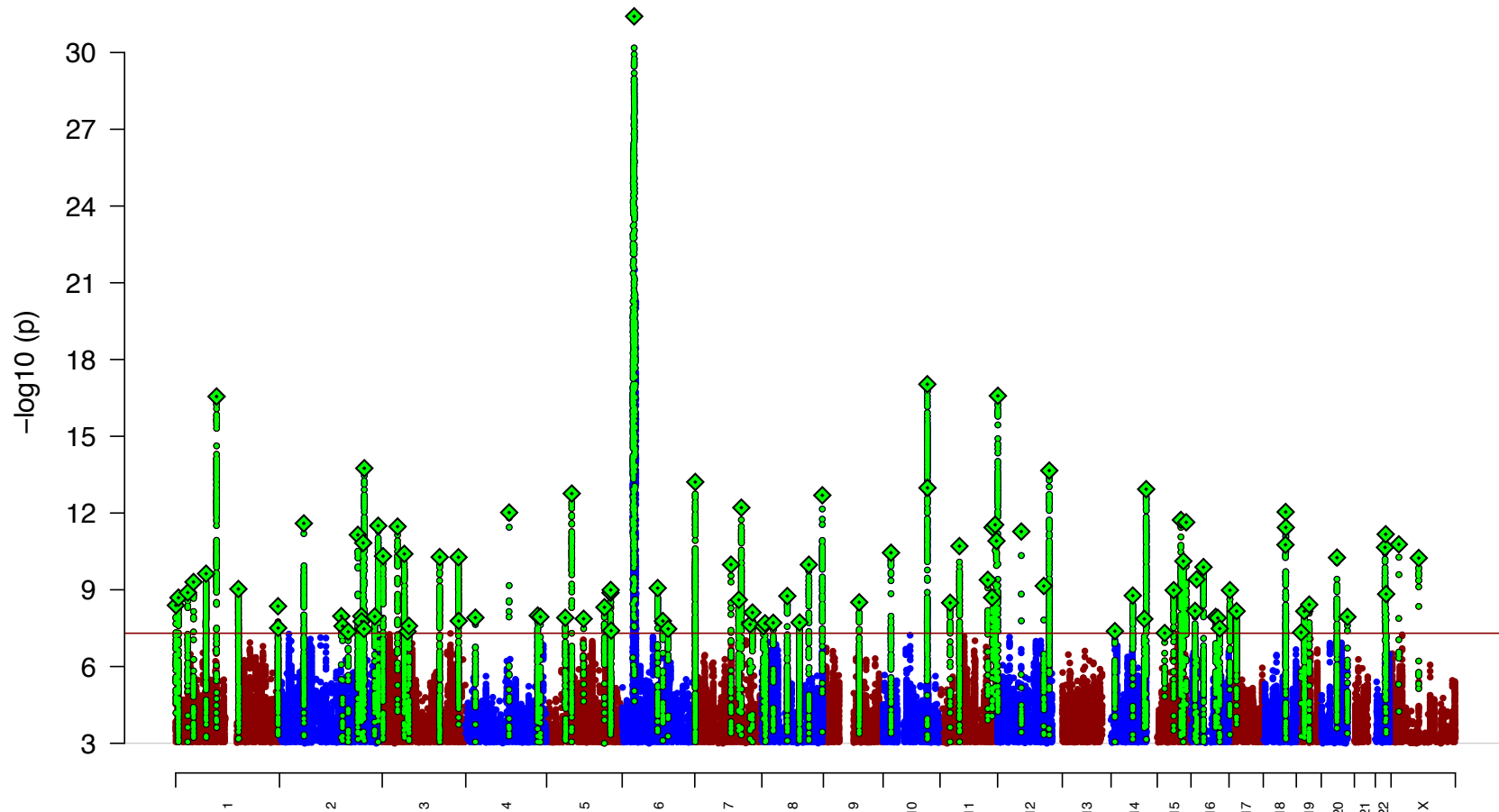
Integration of functional data with genetic association data

Jo Knight

Centre for Addiction and Mental Health

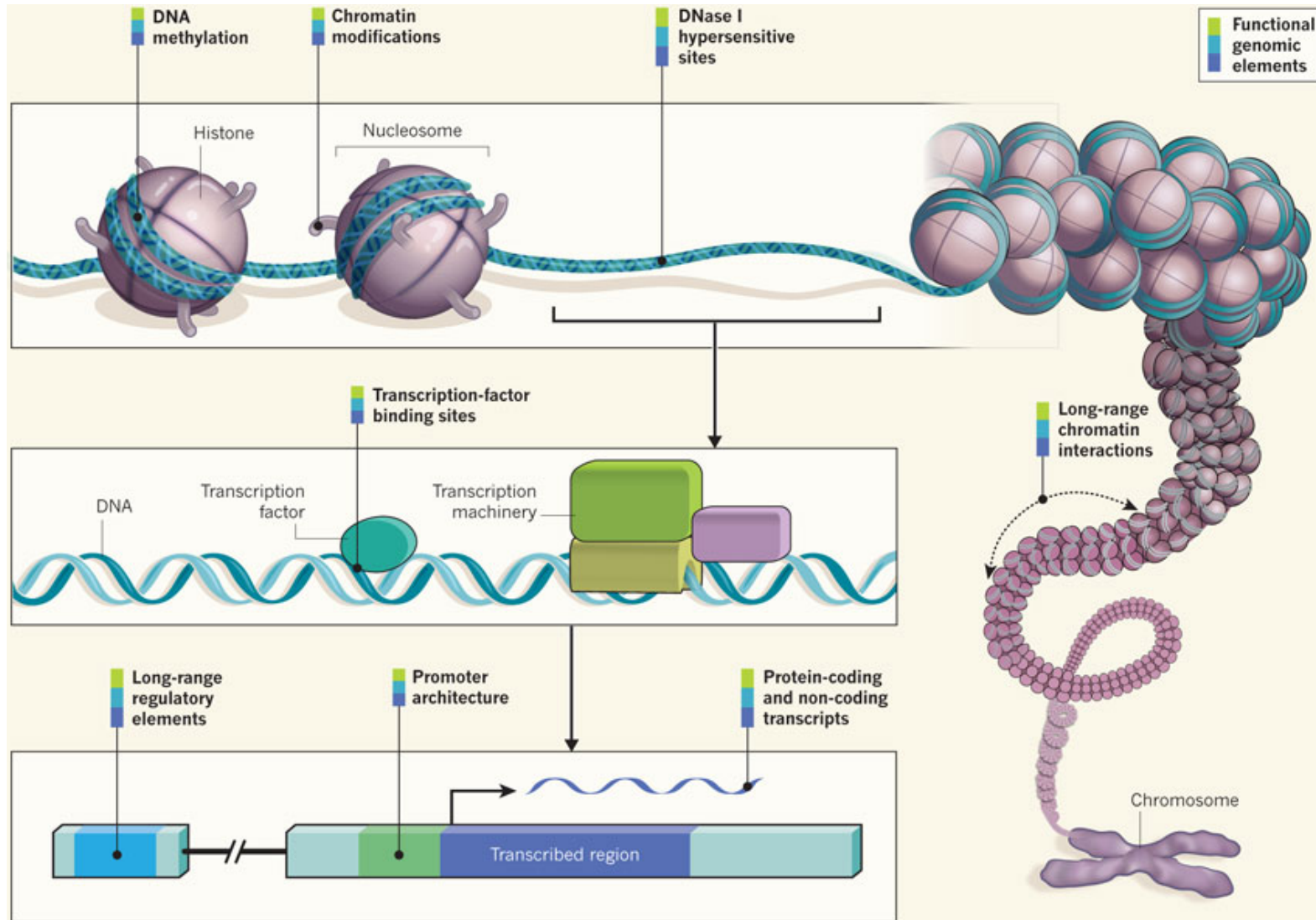
Group: Sarah Gagliano, Sejal Patel,
Jennie Pouget, Reena Ravji

The World is not enough!



Schizophrenia Working Group of the Psychiatric Genomics Consortium, Nature

ENCODE - elements



Collaboration Potential

- We have – experience with GWAS data
- We are always interested in – new data types for integration